

# W.A.MOZART

## 5 DIVERTIMENTI K.439b

Arrangement for String Trio  
in D

Violoncello



FUJI CULTURE SOFT TOKYO 2025-5

## Divertimento 1

W. A. Mozart

Allegro

Vc

12

22

33

44

54

63

73

84

93

104

114

## MENUETTO

Allegretto

**Allegretto**

*p* *f* *p*

12 *f* *p*

23 *f* *p* 1. 2.

**Trio**

33 *f* *p* *f* *p* *f*

43 *p* *f* *p* 1. 2.

Menuetto da capo

Adagio

Adagio

*p* *f* *p*

8

*sf* *p* *p* *cresc.* *f* *p*

16

*f* *p* *f* *p*

## MENUETTO

MENUETTO

11

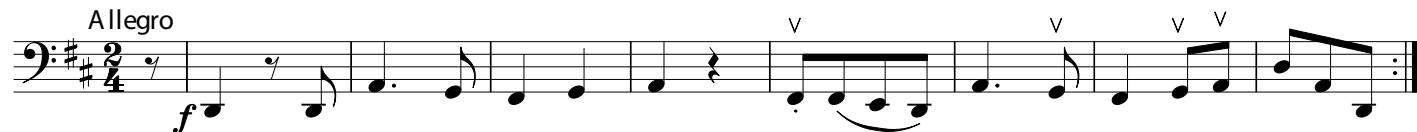
21 Trio

31

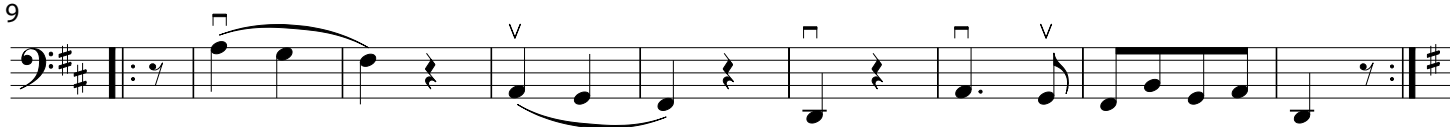
35

Menuetto da capo

RONDO  
Allegro



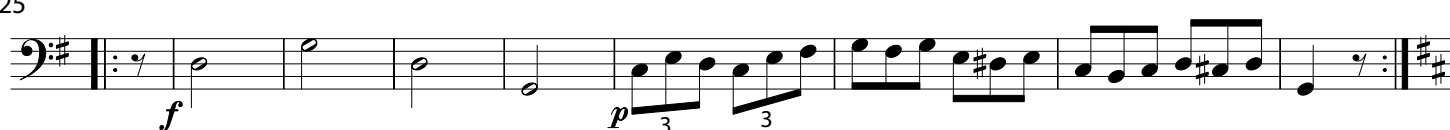
9



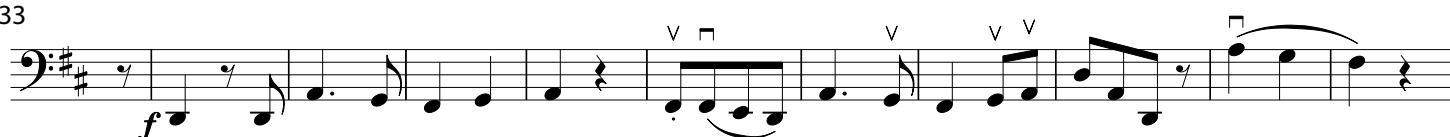
17



25



33



43



54



65



77



89



101



## Divertimento II

Allegro

8

14

19

25

31

## MENUETTO

12

26

33 Trio

43

54

64

Menuetto da capo

## Larghetto

6

7

13

19

26

31

## MENUETTO

11

21

31

40

49

59

Trio

cresc.

cresc.

cresc.

f

Menuetto da capo

FCS011

## Divertimento III

Allegro

9 *f* *p* *f* *p*

17 *p* *f* *p* *f*

24 *f*

33 *p* *f* *p* *f*

41 *p* *f* *p* *f*

50

57 *f* *p* *f*

65 *p* *f*

72

79 *p*

88 *f* *p* *f* *p*



## MENUETTO

10 *f*

20 *f*

30

39 **Trio** *p dolce*

52

62 *p dolce*

75

Menuetto da capo

**A dagio**

9 *f* *f* *p* *f* *f* *p*

15 *p* *cresc.* *f* *p* *f* *p* *f*

25 *p* *1.* *2.* *cresc.* *f* *p*

31 *f* *p*

## MENUETTO

MENUETTO

*p* dolce

8

*f*

16

*f* *p* *f* *p*

24

*f*

32

*p* *f*

40

Trio

*p* *f*

49

*p* *p*

58

*sf* *p* *fp* *fp* *p*

67

Menuetto da capo

## RONDO

Allegro assai

[illegible]

45

*p* *f* *p*

57

*f* *p*

70

*f* *p* *f*

81

*p* *f*

91

*p* 1 2 3 *v* 4 5 6 7

104

*f* *p*

114

*f*

124

3

137

*p* *f* *p* *f*

148

*p* *f*

158

*p* *f* 1. 2.

168

*f* 3

180

*p* *f*

## Divertimento IV

Allegro

Musical score for Divertimento IV, bass clef, 2/4 time, key of D major. The score consists of 10 staves of music, with measures numbered 8, 14, 19, 26, 32, 40, 46, 53, 59, 65, and 73.

Dynamics and articulations include:

- Staff 1 (Measures 8-13):** *f* (forte), *p* (piano).
- Staff 2 (Measures 14-18):** *f* (forte).
- Staff 3 (Measures 19-25):** *p* (piano).
- Staff 4 (Measures 26-31):** *sf* (sforzando), *p* (piano), *sf* (sforzando), *p* (piano).
- Staff 5 (Measures 32-37):** *f* (forte).
- Staff 6 (Measures 38-43):** *p* (piano).
- Staff 7 (Measures 44-49):** *f* (forte).
- Staff 8 (Measures 50-55):** *f* (forte).
- Staff 9 (Measures 56-61):** *p* (piano).
- Staff 10 (Measures 62-67):** *sf* (sforzando), *p* (piano), *sf* (sforzando), *p* (piano), *f* (forte).
- Staff 11 (Measures 68-73):** *f* (forte).

## Larghetto

*p dolce*

5

9

13

15

19

23

*f*

*p*

## MENUETTO

*f*

*p*

*f*

*f*

12

*p*

*f*

23

Trio

1

2

3

4

5

*p*

*f*

33

2

*p*

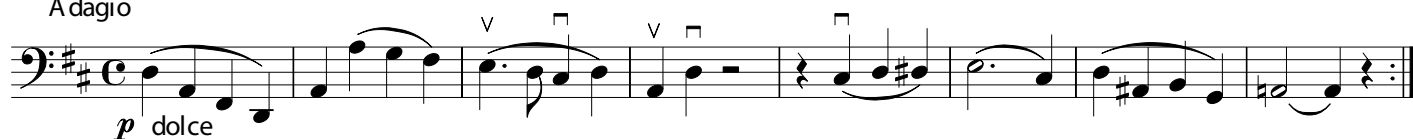
*p*

46

*f*

Menuetto da capo

## Adagio



9

RONDO  
Allegretto

11



22



32



43



55



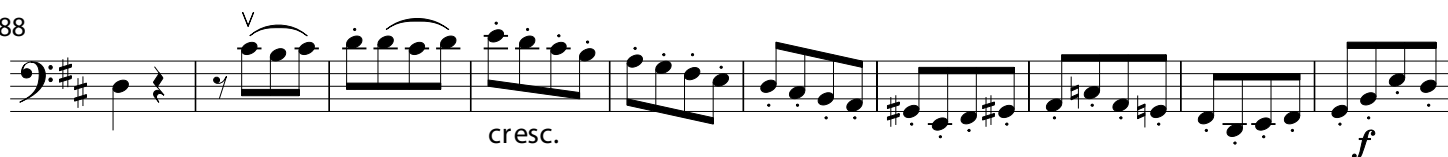
67



78



88



98



## Divertimento V

A dagio

Adagio

*p* dolce

6

cresc.

1.

2.

9

*f*

*p*

*f*

14

*p*

19

*f*

*p*

1.

2.

## MENUETTO

Musical score for the song "The Rose Tree". The score is written for a bass line in 3/4 time, with a key signature of one sharp (F#). The tempo is marked "Moderato". The score consists of six systems of music, with measures numbered 13, 26, 39, 45, 51, and 56. The first system (measures 1-12) includes a repeat sign and a first ending. The second system (measures 13-25) includes a piano (*p*) dynamic. The third system (measures 26-38) includes a forte (*f*) dynamic and a triplet. The fourth system (measures 39-44) is labeled "Trio" and includes a piano (*p*) dynamic. The fifth system (measures 45-50) includes a forte (*f*) dynamic. The sixth system (measures 51-56) includes a piano (*p*) dynamic and a first ending. The score is marked with various dynamics (*f*, *p*), articulations (accents, slurs), and fingerings (1-5).

Menuetto da capo

A dagio

A dagio

*p* dolce

5

9

14

ROMANZE  
Andante

[illegible]

## POLONAISE